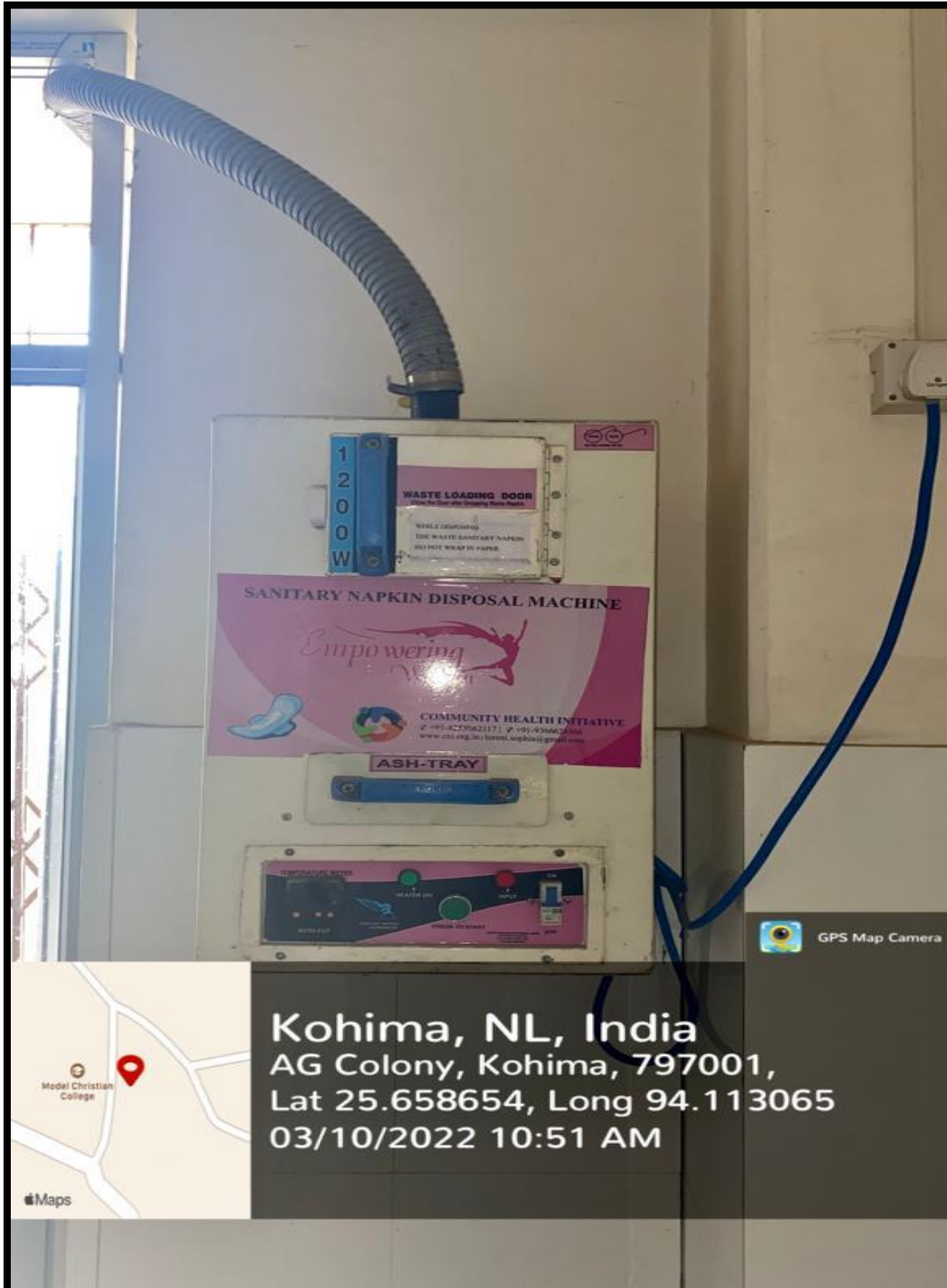


Installation of Feminine Hygiene Machine “Sanitary Napkin Disposal Machine”

Location: Girls Common Room, Ground Floor MCC

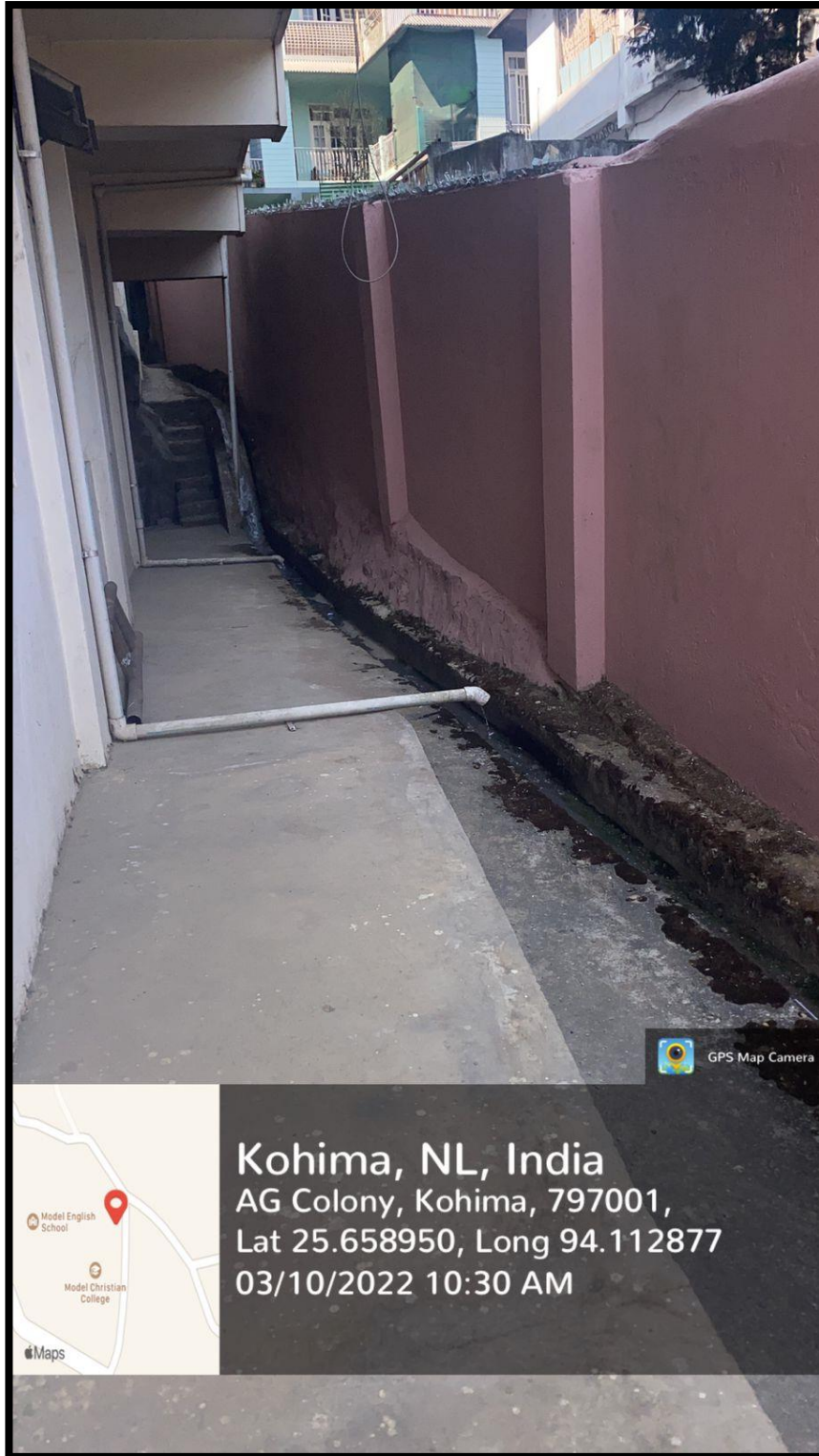
Year: 11th July 2019

Agency: Women Cell, Model Christian College

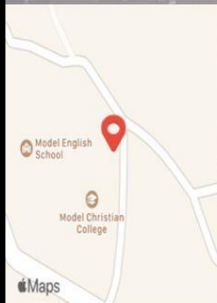


K. Sai
07/03/2022
Principal
Model Christian College
Kohima : Nagaland.

Drainage Pattern of the College.



GPS Map Camera



Kohima, NL, India
AG Colony, Kohima, 797001,
Lat 25.658950, Long 94.112877
03/10/2022 10:30 AM

Soni
07/03/2022
Principal
Model Christian College
Kohima : Nagaland.

Solid waste management

1. Dustbins
2. Dumping site



K. Sani
07/03/2022
Principal
Model Christian College
Kohima : Nagaland.